

DESCRIPTION: —

TARRIF# 7604.29.10.00

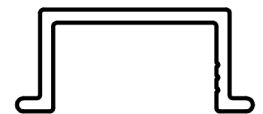
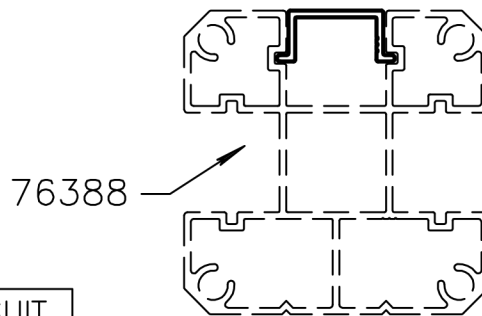
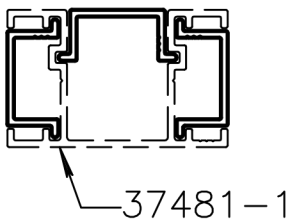
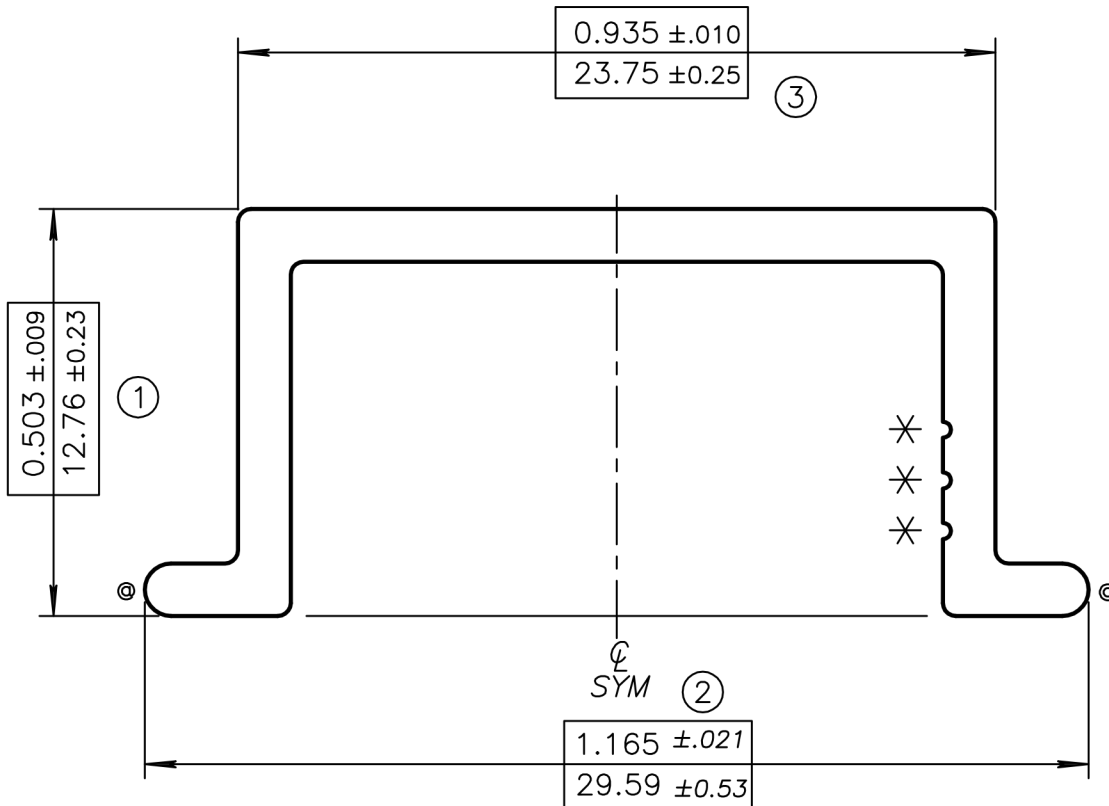
PROPOSAL# 35528-2B

DATE

SYM

REVISION

**RUN WITH BAFF RING ONLY**



CUSTOMER'S SUPPLIED CAD FILE

UNMARKED RADII = RADIUS TO SUIT  
 BREAK CORNERS = 0.016 (0.41) R.  
 (⊙) = FULL R. (2)

(\*) = 0.010(0.25) R. X 0.010(0.25)D. HYDRO I.D. MARKS

**ARCHITECTURAL**  
 FENCE & RAILINGS

UNSPECIFIED WALL THICKNESS

0.065(1.65)  
 ±0.006(0.15)

EST. AREA 0.131 IN<sup>2</sup> 85 MM<sup>2</sup> OUT PER. — IN — MM

EST. WT. 0.157 LBS/FT. 0.234 KG/M FACTOR 26

EST. PER. 4.134 IN 105 MM C.C.D. 1.182 IN 30 MM

DWN BY Danica ALLOY 6063-T6 SCALE 4:1 DATE 03,04,2019

BREAK ALL CORNERS .016"R (0.41 mm)R UNLESS OTHERWISE NOTED.

STANDARD ALUMINUM ASSOCIATION TOLERANCES TO APPLY UNLESS OTHERWISE SPECIFIED