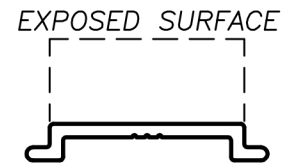
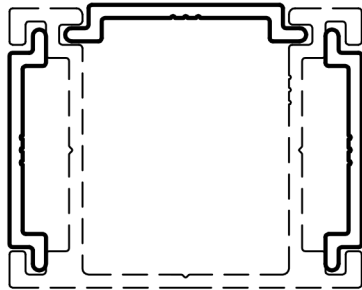
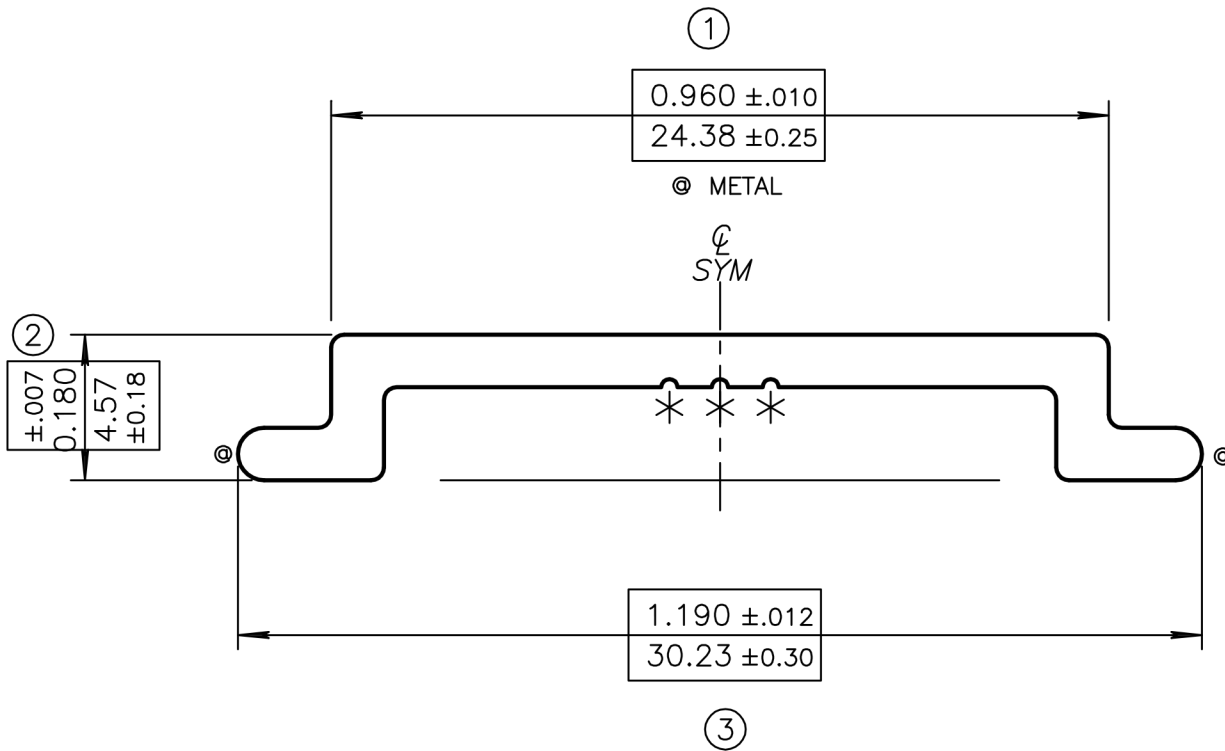


DESCRIPTION: —	TARRIF# 7604.29.10.00	PROPOSAL# 37481-2B
DATE	SYM	REVISION



NOTE:
TO SLIDE-FIT WITH AS-77330

UNMARKED RADII = RADIUS TO SUIT
BREAK CORNERS = 0.016 (0.41) R.
(@) = FULL R. (2)

(*) = 0.010(0.25) R. X 0.010(0.25)D. HYDRO I.D. MARKS

ARCHITECTURAL
FENCE & RAILINGS

UNSPECIFIED WALL THICKNESS

0.065(1.65)
 $\pm 0.006(0.15)$

EST. AREA 0.091 IN ² 59 MM ²	OUT PER. — IN — MM
EST. WT. 0.109 LBS/FT. 0.163 KG/M	FACTOR 27
EST. PER. 2.894 IN 74 MM	C.C.D. 1.190 IN 30 MM
DWN BY Sandra	ALLOY 6063-T5
SCALE 4:1	DATE 12,02,2020

BREAK ALL CORNERS .016"R (0.41 mm)R UNLESS OTHERWISE NOTED.

STANDARD ALUMINUM ASSOCIATION TOLERANCES TO APPLY UNLESS OTHERWISE SPECIFIED