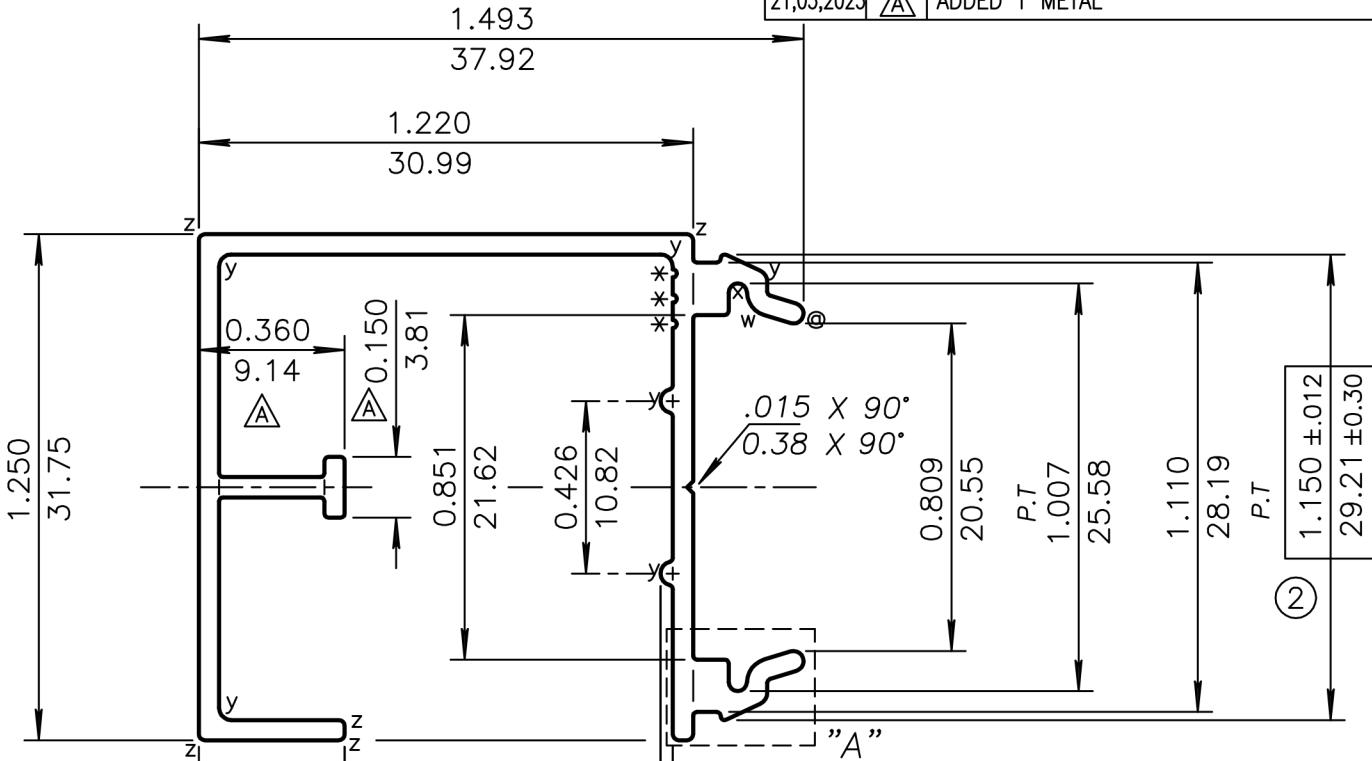


DESCRIPTION: 3/4 FENCE RAIL

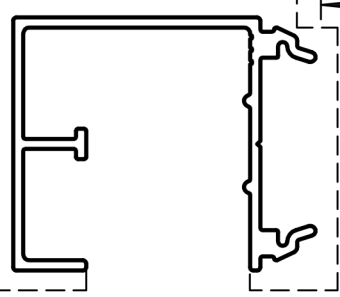
TARRIF# 7604.29.10.00

PROPOSAL# 38351-1A

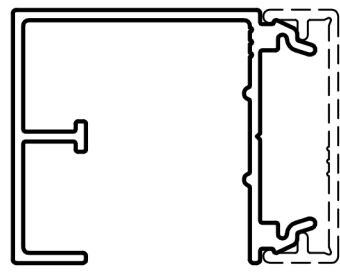
DATE	SYM	REVISION	BY
21,03,2023	△	ADDED T METAL	V.H



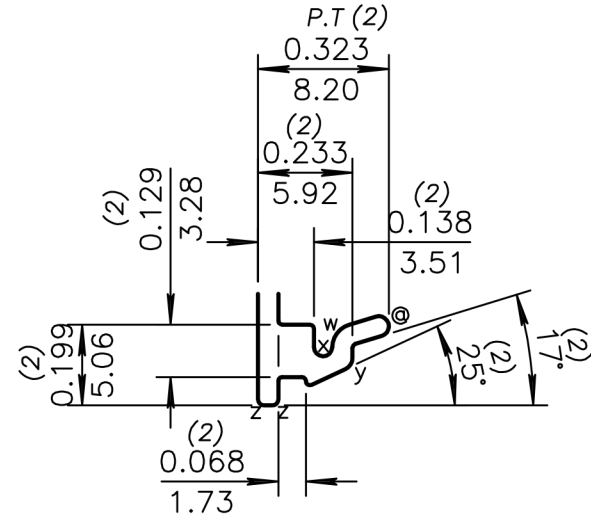
EXPOSED SURFACE



+ .033	①
0.810 - .013	
20.57 + 0.84	
- 0.33	



ACTUAL SIZE



DETAIL A  
SCALE 2:1

AS-64028

UNMARKED RADII = RADIUS TO SUIT  
 BREAK CORNERS = 0.010 (0.25) R.  
 (z) = 0.015 (0.38) R. (7)  
 (y) = 0.030 (0.76) R. (7)  
 (x) = 0.023 (0.57) R. (2)  
 (w) = 0.060 (1.52) R. (2)  
 (⊙) = FULL R. (2)

(\*) = 0.010(0.25) R. X 0.010(0.25)D. HYDRO I.D. MARKS

UNSPECIFIED WALL THICKNESS
③ 0.050 (1.27) ±0.006 (0.15)

EST. AREA 0.267 IN <sup>2</sup> 172 MM <sup>2</sup>	OUT PER. - IN - MM
EST. WT. 0.320 LBS/FT. 0.477 KG/M	FACTOR 31
EST. PER. 10.003 IN 254 MM	C.C.D. 1.839 IN 47 MM
DWN BY Danica	ALLOY 6063-T6
SCALE 2:1	DATE 09,02,2021